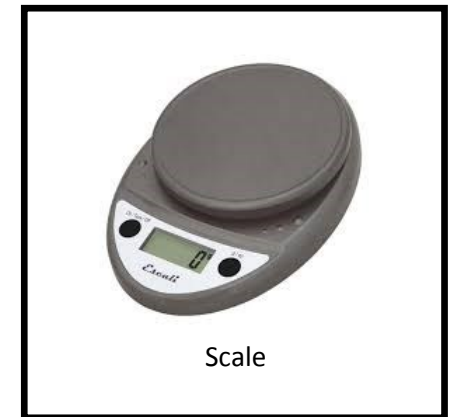


John Jay Homestead Memory: Then & Now

Directions: Life was very different 200 years ago., but not as different as you think! Try your hand at memory and see if you can match the objects from 200 years ago with their modern equivalent.

Cut out each of the squares. Mix them up and lay them in rows, face down. Turn over any two cards. If the two cards match, keep them. If they don't match, turn them back over. It is then the next players turn. The game is over when all of the cards have been matched.





Heater



Foot Warmer



Scrub Brush



Pot Scrubber



Toaster



Toaster



Toilet



Chamber Pot



Stereo



Barrel Organ



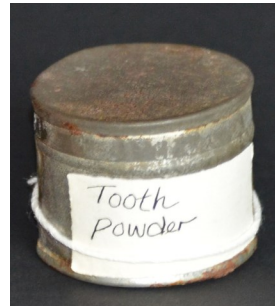
Waffle Iron



Waffle Iron



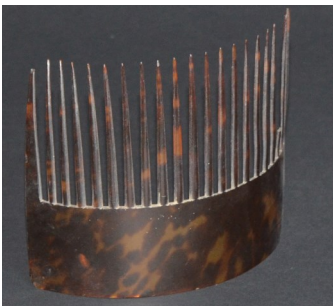
Toothpaste



Tooth Powder



Hair clip



Hair comb



Notebook



Horn book